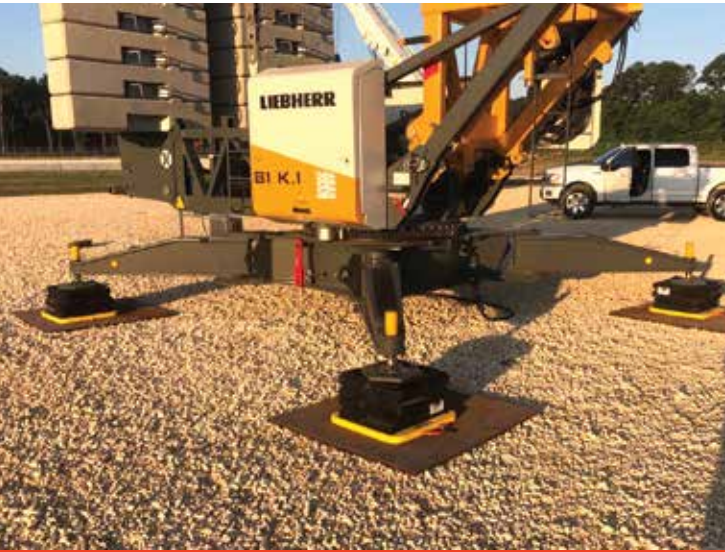




# ProStack Slot Lock Cribbing Blocks



DICA's ProStack Slot Lock Blocks can stack and interlock for optimum stability, giving operators the safety and versatility they need when working in unlevel conditions. The patented design integrates with SafetyTech Outrigger Pads to increase bearing area. Slot Lock Blocks are designed for both operating equipment and static load applications.

Unlike with wood, this engineered solution is made of recycled materials that won't splinter, crack or rot. Integrated hand holds make the blocks easy to handle.

## KEY FEATURES

- ▶ Working load limit is up to 100,000 pounds when used in tandem with a DICA SafetyTech Outrigger Pad.
- ▶ Built-in hand grips allow for easy pickup, carry and placement.
- ▶ Weight is 29 pounds per block.
- ▶ Contact surface is 18"x18" when two blocks are placed side-by-side.
- ▶ Stacking height is 5.0" per block.



# ProStack Slot Lock Setup

## STANDARD SETUP

Standard ProStack Slot Lock Cribbing Blocks with interlocking flanges on both the top and bottom.



### Step 1

Position the outrigger pad, ensuring it is level, stable and in full contact with the ground.



### Step 2

Position the first layer of cribbing blocks onto the outrigger pad so that they lock into place.



### Step 3

Cross-stack additional layers of Slot Lock Cribbing Blocks to achieve your desired height.

## FLAT BOTTOM SETUP

Flat Bottom ProStack Slot Lock Cribbing Blocks with an interlocking flange on the top side.



### Step 1

FLAT BOTTOM blocks are to be used as a base layer with the flat bottom FACING DOWN. They can also be used as a top layer with the flat bottom FACING UP. All blocks in a stack must be oriented so that the large flat “working surfaces” are in FULL CONTACT with the layer above and below.



### Step 2

Position the second layer of cribbing blocks onto the first layer so that they lock into place.



### Step 3

You can add an optional Neoprene grip pad to increase friction between ProStack Cribbing Blocks and stabilizer/outrigger foot to help prevent sliding.

	MODEL	SLOT LOCK	DIMENSIONS (in)	APPROX AREA (sq ft)	WEIGHT (lbs)	MAX ALLOWABLE PRESSURE (psi)	MAX RATED CAPACITY (psi)
<b>Outrigger Pads</b> With Interlocking Slots	PSC-SL-D2424-1.5	YES	24 X 24 X 1.5	4	29	500	100,000
	PSC-SL-D2424-1.5Y	YES	24 X 24 X 1.5	4	29	500	100,000
<b>Cribbing Blocks</b> Flange Bottom and Flat Bottom Blocks	PSC-SL-100	TOP & BOTTOM	21.5 X 9 X 6	1	28	500	100,000
	PSC-SL-150	TOP ONLY	21.5 X 9 X 6	1	28	50	175,000
<b>Neoprene Grip Pads</b> High-Friction Grip Pad (Optional)	NP1818.75	N/A	21.5 X 9 X 6	2	9	N/A	250,000

